



▶ NEW IP67 models with fully encapsulated motors.....1



▶ NEW high output 6in DC fan, available in 12, 24 & 48VDC models.....2



▶ NEW 6025mm W series fan with as much as 25% power savings.....

Cooling focus

CREATING NEW PRODUCTS AND TECHNOLOGY FOR CUSTOMERS IN EVERY MARKET.



IP protection is becoming more common in the market place as fans are being designed into applications that are exposed to elements that can be very punishing.

IP67 Fan

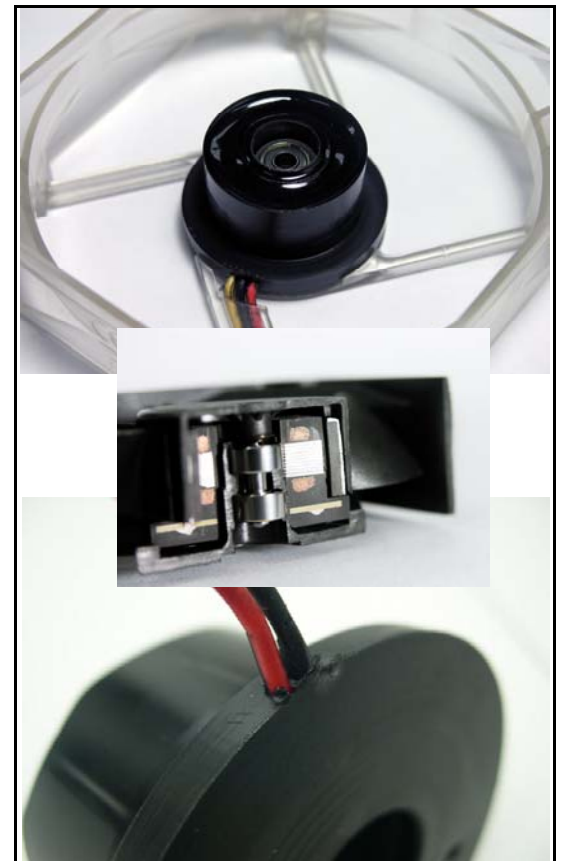
Fully Encapsulated Motor

Many customers have needs for extra protection from the elements in their applications. The most common kind of protection are the IP ratings set for enclosures. YS TECH currently offers IP43, IP44, IP55 and now IP67. You are probably wondering which one is the right one for our customers. Here is a break down of what each does:
 IP43: varnish coating, moisture proof
 IP44: conformal coating, splash proof
 IP55: Paralyene coating, submergeable
 IP67: Encapsulated motor with complete protection.

The encapsulated motor makes this model ideal for very harsh environments in all applications. The motor is completely potted, including the lead wires. This helps with the wicking that occurs on the lead wires making them a very weak link in highly corrosive environments.

This process can be applied to all fans with a thickness greater than 20mm. Further development is underway for thinner models, we will keep you posted on the progress.

Contact us for more info.



Energy Saving 6025mm Fan

A new generation of 6025mm fan series is born, utilizing CFD modeling technology to design brand new blades, along with new stator and new driving circuit motor to increase its maximum static pressure and substantially decrease the required current. It is best used for delicate products or devices that require high static pressure and low current. There can be as much as a 25% energy savings compared to other similar models. **SAMPLES AVAILABLE NOW!**



UP TO 460CFM!!!

172x51mm(6in) Fan That Will Blow You Away!

NEW high output 6in fan for systems that require more cfm and high reliability

Our new 6in DC fan is in final development stages now. This model has been designed to operate at 12, 24 and 48VDC ranging from 250-460cfm and acheive an amazing 15-57mm H20 of static pressure. YS TECH has paid close attention to the details of this very robust fan. The motor is designed to be very reliable and sustain high output in all environments. This fan is available with dual Ball Bearing system, PWM, Tachometers/alarms and many other value added services.

Applications for this type of product :
 Fan trays
 High density machines
 Telecom
 Industrial
 Commercial

Samples will be available in December 2008. We can cross to EBM, Sanyo, Delta, Comair Rotron, and others.
 NOTE: Not all of these competitors have this high of an output!

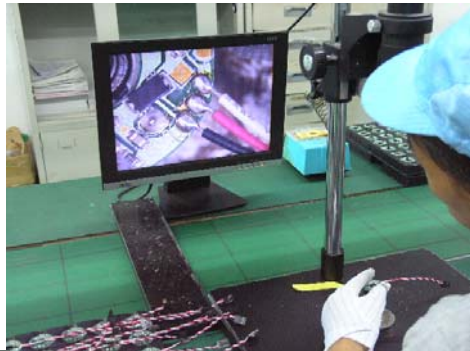
Many Other New Models Have Been Released This Year!

4028mm Q Series
 8032mm high out put
 8038mm upgraded
 12038mm high output
 5115mm blower

Coming next issue:
 Sintetico bearing update
 New 6025mm blower
 Look at what's happening in 2009!



**Smarter Mfg:
 Higher Quality
 @ Lower Price**



YS TECH has invested heavily in new equipemnt this last year in an effort to continue our commitment to quality and being the best thermal solutions partner.

Above is an example of our integrated winding machine. At left is our up close video inspection , new digital balancing equipment and highend arflow chamber measuring up to 1000cfm.